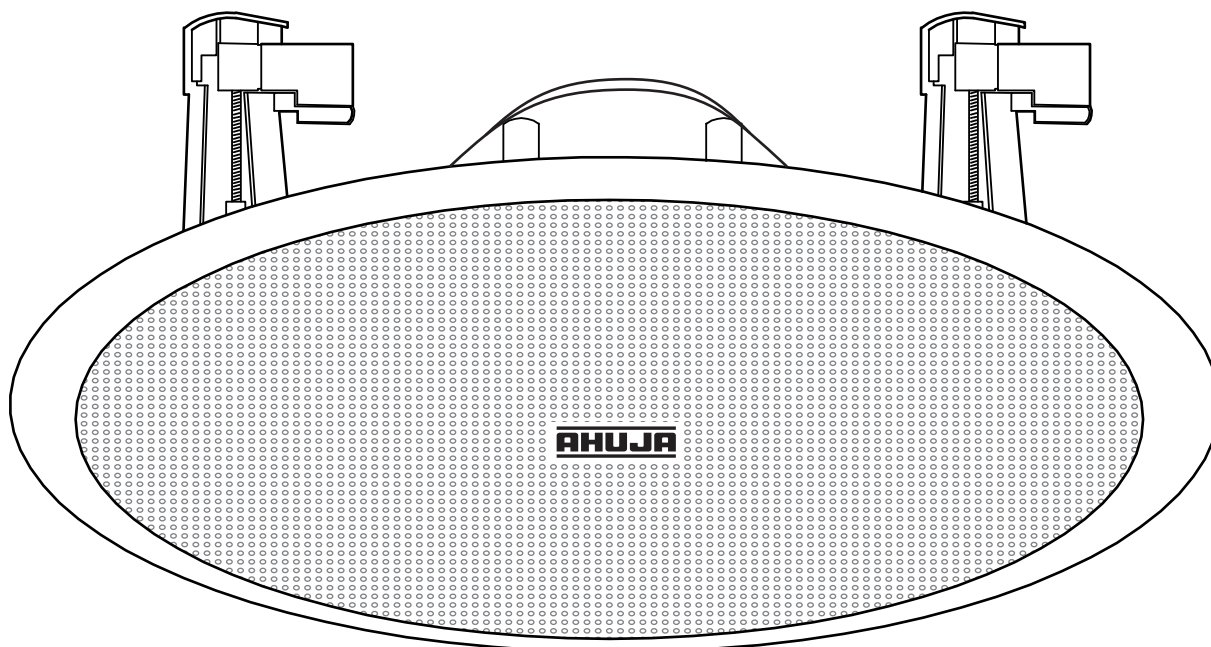


CS-8151T | CS-6081T | CS-5061T

AHUJA offers a wide range of ceiling speakers namely: CS-8151T, CS-6081T & CS-5061T. The speakers have aesthetically designed grills and frames which integrate wonderfully well with all interiors. The new speakers have exceptionally high fidelity with excellent frequency response and a remarkable coverage pattern for even distribution of sound. Superbly engineered for simple and safe installations makes these ceiling speakers the preferred choice for a variety of applications like in Hotels, Office Buildings, Restaurants, Hospitals, Shopping Malls, Departmental Stores, Cinemas, Gyms etc.

Features

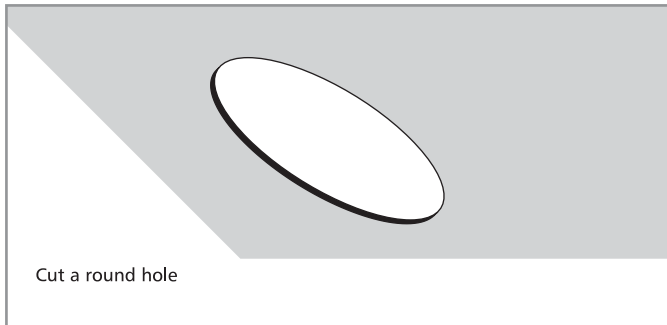
- High quality full range ceiling speakers.
- Easy selection of power taps on 100V Line Matching Transformer.
- Aesthetically designed, moulded plastic frame with metal mesh grill.
- Easy to mount arrangement which is rigid and tamper proof.

Specifications

Model	CS-8151T	CS-6081T	CS-5061T
Input Power	15W RMS	8W RMS	6W RMS
Power Taps on 100V	15/10/5W	8/4/2W	6/3/1.5W
Speaker	1 × 8"	1 × 6"	1 × 5"
	Dual Cone Full Range	Full Range	Full Range
Impedance	670/1k/2kΩ	1.25k/2.5k/5kΩ	1.6k/3.3k/6.6kΩ
Frequency Response	55-16,000Hz	60-15,000Hz	60-15,000Hz
SPL (1W/1m)	93dB	92dB	92dB
Dimensions	ø270 × H98 mm	ø227 × H77 mm	ø200 × H85 mm
Weight (approx.)	1.40kg	780g	750g

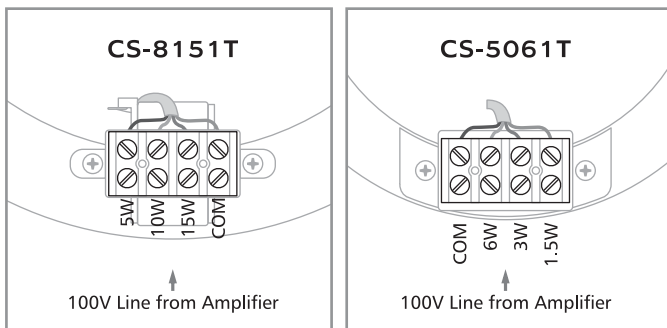
Installation Procedure

STEP 1

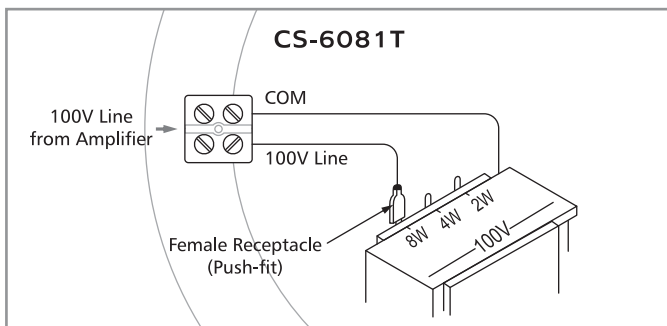


Cut a round hole into the false ceiling in accordance with the following sizes: CS-8151T : $\varnothing 240$ mm, CS-6081T : $\varnothing 197$ mm, CS-5061T : $\varnothing 168$ mm

STEP 2

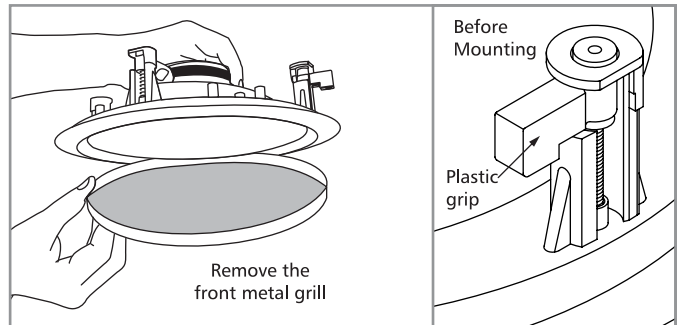


- a. For selecting the desired power tap in **CS-8151T** & **CS-5061T**, connect the 100V line from the amplifier to the required power tap as available on the 4 pin terminal block of the respective ceiling speaker.



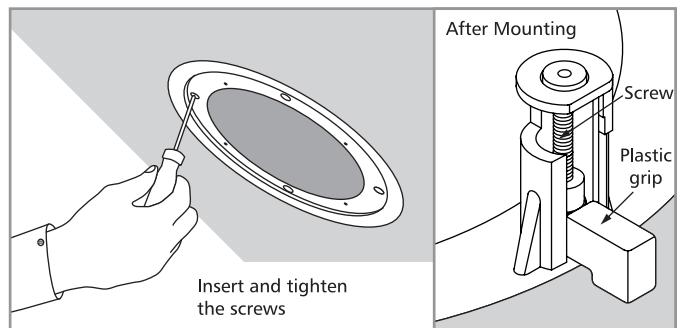
- b. For selecting the desired power tap in **CS-6081T**, connect the 100V line from the amplifier to the 2 pin terminal block. Now connect the push-fit type female receptacle, as shown in the diagram, on the transformer tag for the required power tap selection.

STEP 3



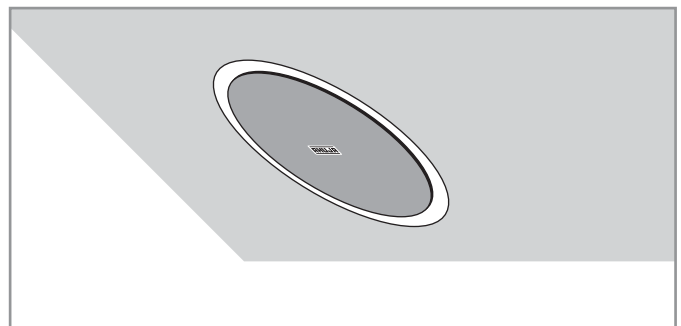
Remove the front metal grill by using a proper pin and adjust the plastic grips (4 nos.) as shown in the diagram.

STEP 4



Insert the ceiling speaker in the round hole of the false ceiling and tighten the wood screws (available in each plastic grip) till the plastic grips start gripping the false ceiling. The position of plastic grips, after tightening, is shown in the diagram. Ensure screws are not over-tightened.

STEP 5



Place the front metal grill back on to the fixed speaker with a gentle push.