

AHUJA®**Portable PA Amplifier**

30W Max.

BTA-550

-
- ◆ Thank you for purchasing AHUJA Portable PA Amplifier BTA-550.
 - ◆ Please read this manual thoroughly before making connections and turning on the power. Following the instructions in this manual will enable you to obtain optimum performance from your new AHUJA Portable PA Amplifier.
 - ◆ Please retain this manual for future reference.

• Safety Instructions

Read the Instructions: Please read all the instructions in this section carefully before installation or use of the product. All the safety instructions must be followed.

Retain the Instructions: Please retain this Instruction Manual for future reference.



This symbol, wherever it appears, alerts you to the presence of uninsulated hazardous voltage that may be sufficient to constitute a risk of electric shock. External wiring to any terminal marked with this symbol must be done by a trained and instructed person only.



This symbol, wherever it appears adjacent to a component, alerts you that the concerned component can only be replaced by another of the exact same specifications.

WARNING

- To reduce the risk of electric shock, do not open the product. No user serviceable parts inside. Refer all servicing to qualified personnel only.
- Before replacing any fuse, make sure the set is switched off and disconnected from the AC mains or any other power source. Replace a fuse only with another of exactly same specification.

CAUTIONS

Water & Moisture: To reduce the risk of fire or electrical shock, do not expose this product to rain or moisture. Do not use this product near water or in a wet location. Do not keep any object filled with liquid, such as a vase, on top of this set. Do not insert or remove the AC mains plug with wet hands.

Power Source: The voltage & frequency of the AC mains supply, to which this set can be connected, is marked on the rear panel of the set. Do not connect this set to any power source other than those specified on the rear panel.

Power Cord Protection: Do not cut, kink, damage or modify the AC power cord supplied with this set. Keep the AC power cord away from heaters and harmful chemicals. Do not keep any heavy object on the power cord.

Operation on Generator: When operating this set on a generator, make sure the set is switched off till the generator voltage has stabilized.

Stability: This set must be kept in a stable and flat horizontal position, and never in a tilted position. Do not place this set on an unstable stand, tripod, bracket or mount. Do not use attachments which are not supplied or explicitly recommended by the manufacturer.

Cleaning: Disconnect this equipment from the AC mains before cleaning.

Important

- To charge the built-in battery, connect the 240V AC mains, but keep POWER switch on the rear panel to OFF. Charge immediately after purchasing the set, and also periodically thereafter (even if set is not used on built-in battery)
- When the set is not in use, keep the power switch OFF.

• Table of Contents

Contents	Page No.
Safety Instructions	2
Features	3
Rear Panel Controls & Description	4
Guideline for fixing mic holder	5
Remote Control Features	6
Wireless Microphone	6
Operation & Interconnections	7
Guideline for using Bluetooth, TWS and Sing Along.	7
Specifications	8

• Features

- Elegant and compact Portable PA Amplifier in moulded cabinet with trolley system.
- Two Mic inputs, One Wireless Mic & One Aux (Guitar) input.
- Built-in 20.32 cm (8") 30W Full Range Dual Cone speaker & a tweeter.
- Mic-1 and Wireless Mic have selectable priority over all other inputs.
- Built-in MP3 Player with Bluetooth, Recorder and remote control.
- Built-in Digital Echo.
- Active Bass & Treble controls.
- LED indications for low battery, charging & clip output.
- Facility of auto cut-off to prevent battery from deep discharge.
- Three power source operation (AC mains, External 12V DC or built-in 11.1V 2.2Ah rechargeable Li-ion battery).

• Rear Panel Controls & Description

1. MP3 Playback Facility

a. **USB Connector:** Insert the USB drive here.

b. **M M C / T F C a r d Connector:** Insert the MMC/TF Card here.

c. **REC:** Press once to start recording. Short press to Pause recording and short press again to resume recording. Long press to playback recorded file.

d. **TWS/Sing Along:** Short press to enable the TWS mode for the amplifier set. Long press when playing through Bluetooth mode will enable 'Sing Along' function.

e. **Display:** Will display the volume level, track being played & other functions.

f. **▶▶VOL+:** Short press to select next track. Long press to increase the volume level.

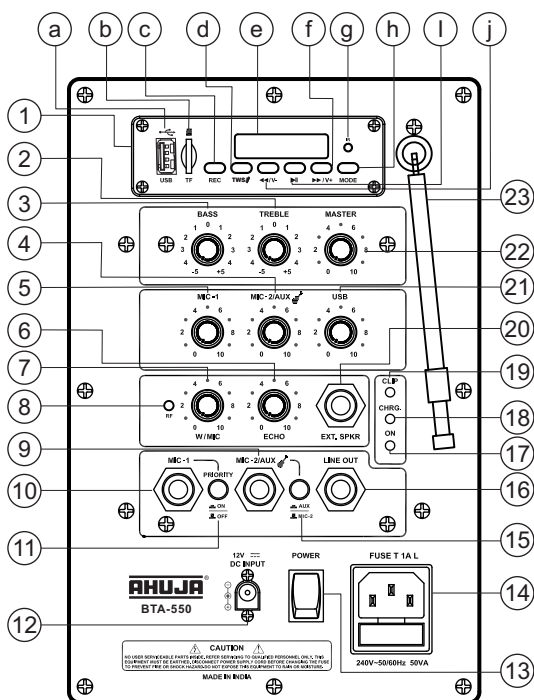
g. **IR Sensor:** To operate the remote functions, point the remote control towards the IR Sensor.

h. **MODE:** Press this button to switch between Bluetooth, USB, and SD modes.

i. **PLAY:** Press to play the track. Press again to pause when a track is being played.

j. **◀◀ VOL-:** Short press this switch to select prev track. Long press to decrease the volume level.

2. **Treble Control:** To increase or decrease the level of high frequency content in the music.



3. **Bass Control:** To increase or decrease the level of low frequency content in music.

4. **MIC-2/AUX Volume Control:** Used for adjusting signal level of MIC-2/AUX input.

5. **MIC-1 Volume Control:** Used for adjusting signal level of MIC-1 input.

6. **ECHO:** To adjust the level of delay and Echo in the programme.

7. **Wireless Mic Control:** To adjust the level of wireless MIC when RF LED is glowing.

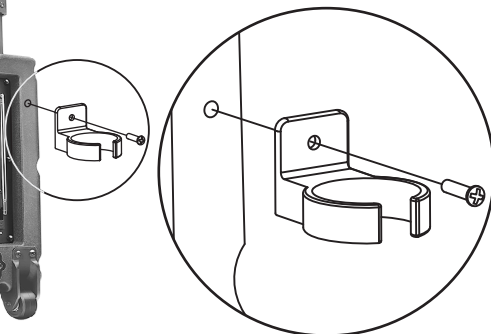
8. **RF LED:** This RED LED glows when the wireless transmitter is switched ON.

9. **MIC-2/AUX Guitar Input Jack:** Used for a Mic/Aux input or a guitar input.

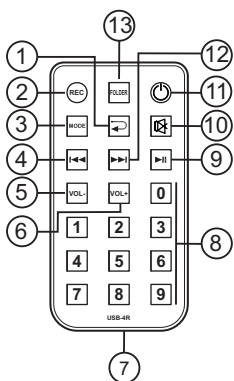
• Rear Panel Controls & Description

10. **MIC-1 Input Jack:** Used for connecting a wired mic.
11. **Priority Switch:** Pressing this switch will give priority to MIC1 and wireless mic over all other inputs.
12. **DC Input Socket:** For connecting external 12V Car Battery.
13. **Power Switch:** Press upper part of the knob to switch ON & lower part of the knob to switch OFF the set. **Charging of built-in rechargeable battery is done at OFF position of the power switch.**
14. **Mains Socket with 1 Amp Fuse:** AC socket for connecting the detachable AC lead, as supplied along with. This has a built-in AC fuse of T1AL rating.
15. **MIC-2/AUX Selector switch:** Press the switch to change from MIC-2 to AUX input source.
16. **Line Output:** Provides a line level mixed output signal of all inputs.
17. **ON LED:** When set is ON, this LED will glow GREEN. When set is working on built-in battery, the glow of the LED is GREEN indicating the battery is fully charged. When the built-in battery voltage is below the specified level, the glow of LED will change to RED giving indication of "Low Battery". After few minutes it will switch OFF completely.
18. **CHARGE:** Indicates the charging status of the battery. During charging, the glow of LED is AMBER. When battery is fully charged, the glow of this LED changes to GREEN colour.
19. **CLIP LED:** This RED LED glows when the output is nearing the clipping level. The glow of the LED alerts the user that the signal level is close to clipping level. User may adjust controls accordingly.
20. **Ext Speaker:** 6.3mm (1/4") mono jack socket is provided to connect an external speaker. Internal speaker is disconnected when a mono plug is inserted.
21. **USB Control:** To adjust the signal level of the MP3 player input.
22. **Master Control:** This control adjusts the level of mixed signal of all inputs.
23. **Antenna:** For Wireless Mic, extend the antenna for best performance while in use.

• How to Fix Mic Holder

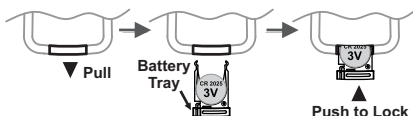


• Remote Control Features



1. **↻ Cycle Mode:** Repetitive pressing of this button provides various options like REPEAT ONE, REPEAT FOLDER, RANDOM, and REPEAT ALL.
2. **REC:** Press REC button when USB/SD Card is connected, then module will start recording in USB/SD Card. During recording short press the REC button, it will Pause the recording. Press again to resume the recording. Long press of REC button or short press of Play button during recording will immediately start playing the latest recorded file.
NOTE: REC Function is available for MIC-1, MIC-2 / AUX and wireless mic only. When using a blank USB drive, long press REC button to access the recording folder and playback recorded file.
3. **Mode:** Press this button to switch between Bluetooth, USB, and SD modes.
4. **⏮ Prev:** During playback short pressing the Prev. key will go to the prev. file/track. Long press will fast backward the track. In main menu, short pressing previous key will go to the previous option.

5. **VOL- :** To decrease volume level of MP3 player.
6. **VOL+ :** To increase volume level of MP3 player.
7. **Battery Replacement:** Pull out the battery tray and replace the battery with positive electrode facing upwards as shown in fig. below. Push the battery compartment back to the close position. Use CR2025 or equivalent lithium coin cell.



8. Number key 0 to 9. To choose the track number to be played.
9. **▶|| PLAY/PAUSE:** Press PLAY/PAUSE once to pause if music is already playing. Press PLAY/PAUSE again to resume playing. During recording, short press of PLAY/PAUSE will immediately start playing the recently recorded file.
10. **🔇 MUTE:** Press once to mute the audio, press again to resume the audio.
11. **Power:** Press once to switch off MP3 player, press again to switch ON.
12. **▶▶ Next:** During playback, short press the Next key to go to the next file or track and long press to fast forward the track. In main menu, short press Next key to go to the next option in the main menu.
13. **Folder:** Press the FOLDER key to switch between folders stored in USB or TF card. Long press FOLDER key to playback recorded file if any.
NOTE: This key function will be operational only when more than one folder has been stored in the USB or TF card.

• Operation & Interconnections

- Plug in the AC power cord to the nearest AC mains socket and charge the built-in battery before use. To charge the Built-in battery, keep the Power switch of the unit at OFF position & 240V mains connected. For full charging of 2.2Ah battery, it can take up to 4 hours.
 - Amplifier can be used on AC mains or battery as desired by user.
 - Keep Volume controls zero and Switch ON the power switch to use the Amplifier.
 - Set the desired level of Input controls for optimum listening level.
 - Set the Bass/Treble controls to the desired level.
 - Continuous glow of the CLIP LED indicates that signal level is excessive. Set the Input controls such that the clip LED does not glow continuously. Occasional glowing of CLIP LED is normal during operation.
 - In case of AC mains failure, the power backup will automatically change over to an external 12V battery (if connected) or to 11.1V internal rechargeable battery.
- When the set is not in use put the power switch to OFF position. This will prevent unnecessary current consumption of the internal battery.

• Guideline for using Bluetooth, TWS and Sing Along

BLUETOOTH

- Switch ON the BTA-550. The MP3 module display shows "On"
- Press MODE switch of amplifier module to select bluetooth option. MP3 module display show the word "bt".
- Select the bluetooth option in Mobile phone & follow the instruction as appearing on Mobile phone for pairing the new device.
- After a search, a new device by name "AHUJA" appears on the Mobile phone screen.
- Select the new device "AHUJA" and confirm for pairing.
- When pairing is completed, the displays show "-bt-". Select the track to played and set the volume level of mobile & Amplifier to desired levels.

TWS

- Two nos of BTA-550 can be used for True Wireless Stereo function.
- Power ON only one unit of BTA-550 to make it as MASTER unit.
- Perform BT pairing with this MASTER unit.
- Now power ON the second unit of BTA-550, which becomes SLAVE unit and select BT Mode.

- Short press TWS button of MASTER unit and 't-SC' is displayed on the screen.
- After few seconds, TWS function is activated which is confirmed by the display '-bt1' in MASTER unit and '-bt2' in SLAVE unit.
- When music is played through the paired source device then both units of BTA-550 can be placed on left and right side for true wireless playback of the music.

SING ALONG

- In this feature only the vocals are attenuated so that the user can sing along with the original music
- To activate Sing Along in BTA-550, long press TWS button and 'ON' is displayed on the screen. To deactivate, long press TWS button and 'OFF' in displayed on the screen.
- In TWS setup, Sing Along can be activated by long press of TWS button in the MASTER unit.

Note: The level of attenuation will vary according to the music/vocal contents of the track being played.

• Specifications

Receiver	BTA-550
Speakers	1 x 8" (20.3cm) Full Range Dual Cone Speaker & 1 x 1.85" (4.7cm) Tweeter
Power Output (Full range)	30W Max.
Input Channels	2 x Mic 4mV/4.7k Ω , 1 x Aux 100mV/47k Ω , 1 x Wireless MIC
Frequency Response	55-18,000Hz \pm 3dB
S/N Ratio	>60dB
Tone Controls	Bass \pm 5dB at 100Hz, Treble \pm 5dB at 10kHz
Digital Player	MP3 player with USB, MMC/TF card reader, Recording function and Bluetooth.
Line Output	775mV
Protections	AC Fuse: 1 Amp. 250V (T 1A L)
Power Supply	AC : 220V-240V 50/60Hz DC : 12V Car Battery (external), 11.1V 2.2Ah Rechargeable Li-ion battery (built-in)
AC Power Consumption	50VA
Dimensions	W550 x H330 x D210 mm
Weight	5.60kg Approx.

Transmitter	Handheld Transmitter
RF Output Power	15mW (Max.)
Frequency Response	50-15,000Hz
Power Supply	3V (2 \times 1.5V AA Pencil Cells)
Current Consumption	110mA at 3V DC
Controls	POWER ON/OFF switch
Indication	Red LED for indicating microphone is ON
Dimensions	\varnothing 55 (L 248) mm
Weight	180g (w/o battery) Approx.

Design and Specifications are subject to change without notice owing to continuous product up-gradation. Technical specifications are subject to production tolerances. We cannot be held responsible for printing errors, should they occur. **AHUJA** is a registered trademark of Ahuja Radios in India and other countries. © Copyright Ahuja Radios, 2023. All rights reserved. Any unauthorized reproduction or use of logos, images or design elements is strictly prohibited by law. No part of this compilation may be reproduced in any manner or translated without written permission.

AHUJA RADIOS

E. & O. E. 0K/00/23

215, Okhla Industrial Estate, New Delhi-110020, INDIA • C-45, Phase-II, Noida-201305 (UP) INDIA

Tel.: +91-11-26831549, 41612474 Fax: +91-11-26847287

E-mail: ahuja@ahujaradios.com Website: www.ahujaradios.com