

PSX-302DP

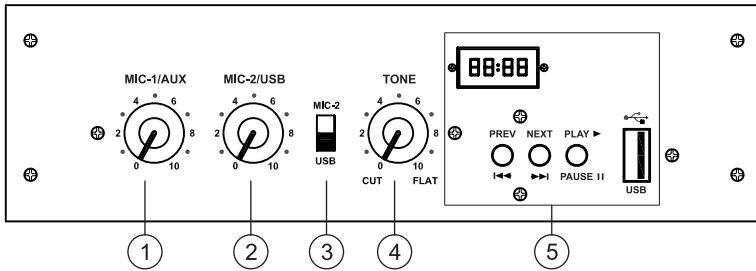


FEATURES

- Easily Portable.
- Built-in 12V-7.2 Ah rechargeable Battery.
- Two Mic and one Aux inputs.
- Built-in 6.5"/6Ω Dual Cone Speaker.
- Built-in MP3 Player.
- Tone control for proper shaping of frequency levels.
- A Clip LED to monitor the output and to caution overdrive.
- Operation on AC mains or 12V external DC power source (car battery) or 12V 7.2Ah built-in rechargeable battery.
- Low battery and recharging indications.
- Auto power cut at low battery voltage.

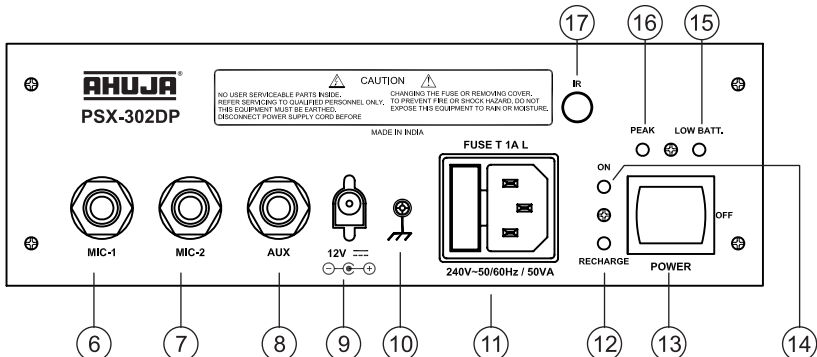
-
- ◆ Thank you for purchasing the AHUJA Portable PA Amplifier System.
 - ◆ Please read this manual thoroughly before making connections and turning on the power. Following the instructions in this manual will enable you to obtain optimum performance from your new AHUJA Portable PA Amplifier System.
 - ◆ Please retain this manual for future reference.

• Top Panel Controls & Description



1. **MIC-1/AUX Volume Control**
2. **MIC-2/USB Volume Control**
3. **MIC-2/USB Switch**
4. **TONE Control:** For attenuating the signal level of high frequencies.
5. **MP3 Playback Facility**
 - a. **PREV** ◀◀: To select the previous track.
 - b. **NEXT** ▶▶: To select the next track.
 - c. **PLAY** ▶ / **PAUSE II**: Press Play/Pause once to Pause when music is already playing. Press Play/Pause again to resume playing.
 - d. **Display:** Displays the track played.
 - e. **USB Connector:** Insert the USB drive here.

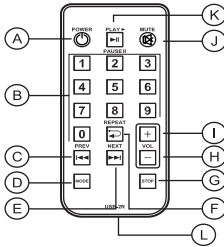
• Rear Panel Controls & Description



6. **MIC-1 Input Jack**
7. **MIC-2 Input Jack**
8. **AUX Input Jack:** For accepting a signal from an auxiliary source like CD Player, Keyboard, Echo Mixer etc.
9. **Battery Socket:** For connecting 12V Car Battery as external standby power source.
10. **Earth Terminal**
11. **IEC Mains Socket with 1 Amp Fuse**
Connect the AC mains lead supplied to this socket.
12. **Recharge LED:** This LED glows during recharging of battery. When this "Recharge" LED stops glowing, it means charging is completed. Move the power switch (14) to OFF position.
13. **POWER Switch:** This is 3 position power switch. Press upper part of knob to switch ON and press lower part to recharge battery. In the centre position all functions are OFF.
14. **Power LED**
15. **Low Battery LED:** This LED glows when battery voltage is below the specified level. Please recharge battery after low battery indication, as the set will switch off shortly to prevent deep discharge of the battery
16. **CLIP LED:** This LED glows when the output is at clipping level. Reduce the level controls to ensure this LED is not continuously glowing.
17. **IR Sensor:** Point the remote control towards this for satisfactory reception of remote control commands.

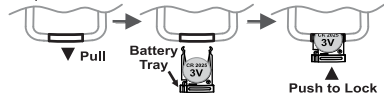
• Operation & Interconnections

Remote Control

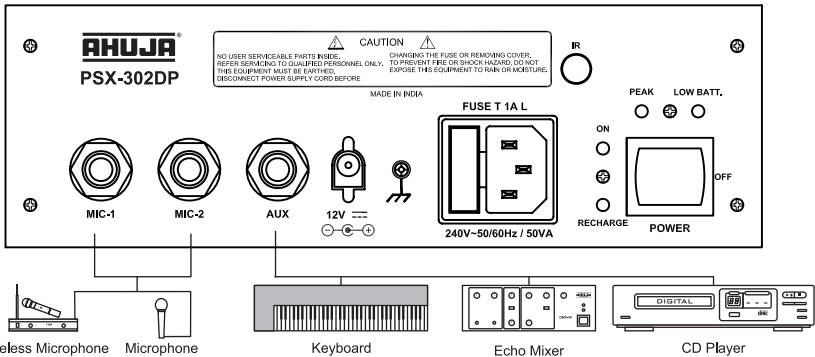


- A. **Power:** Press once to switch off MP3 digital player, press again to switch ON.
- B. **Number key 0 to 9.** To select the track number to be played.
- C. **◀◀:** To select the previous track.
- D. **MODE:** not in use.
- E. **▶▶:** Press to select the next track.
- F. **↻** Press once to repeat the song being played. Press again to repeat all the songs.

- G. **STOP:** Press to stop the track being played.
- H. **Vol:** Press to decrease the volume of Digital Player.
- I. **Vol:** Press to increase the volume of Digital Player.
- J. **⊘ MUTE:** Press once to mute the sound, press again to resume the sound.
- K. **▶▶/PAUSE:** Press Play/Pause once to Pause when music is already playing. Press Play/Pause again to resume playing.
- L. **Battery Replacement:** Pull out the battery tray and replace the battery with positive electrode facing upwards as shown in fig. below. Push the battery compartment back to the close position. Use CR2025 or equivalent lithium coin cell.



Operation:



- Make necessary interconnections and set all the volume controls to '0' position.
- Plug in the AC power cord to the nearest AC mains socket and fully charge the built-in battery before use. Then switch to ON position to use the amplifier.
- Glow of red LED indicates that power is ON and the set is ready for operation.
- Set the desired Input level controls for optimum listening level.
- Set the tone control to the desired level.
- Continuous glow of the clip LED indicates that signal level is excessive. Set the level controls so that the clip LED does not glow continuously.
- In case of AC mains failure, the set will automatically work on an external 12V battery (if connected) or 12V internal battery.
- If "LOW BATT." red LED starts flashing, it means the built-in battery is almost discharged. Start recharging immediately. Otherwise, the set will stop working to avoid complete discharge.

NOTE: When internal battery is not used put power switch to OFF position. When set is not being used keep the Power Switch at OFF position. Amplifier can not be used when the power switch is on recharge position.

• Safety Instructions

Do not remove the back cover. No user serviceable parts inside. Refer all servicing to qualified personnel only.

Water and Moisture:

In order to prevent any fire or shock hazard, do not expose this equipment to rain or moisture.

Power Source:

The equipment should be connected to a 220-240V 50Hz AC or 12V DC power source or use 12V 7.2Ah internal rechargeable battery.

Power-cord Protection:

Do not cut, kink, damage or modify the power supply cord supplied with the equipment. Keep the power supply cord away from heaters & harmful chemicals. Do not place heavy objects on the power cord.

Operation on Generator:

When operating the set on a generator, make sure it is switched 'OFF' till the generator voltage has stabilized and then only switch ON the amplifier.

Protection Against Shocks:

Do not plug in or remove the AC power supply plug with wet hands so as to avoid electric shock.

Replacing AC Mains Fuse:

Replace the AC fuse only after putting the Power Switch in OFF position, and disconnecting the AC cord from AC mains. Replace with another fuse of the exact specified rating only.

Grounding:

The equipment must be earthed properly before operating it to avoid electric shock. A wire from the Earth Terminal must be connected to electrical earth for safe operation.

• Specifications

Power Output	20W Max., 15W RMS at 10% THD, 13W RMS at 5% THD
Input Channels	2 × Mic 1.5mV/4.7kΩ, 1 × Aux 100 mV/330kΩ
Frequency Response	120-15,000Hz ±3dB
S/N Ratio	60dB
Tone Controls	-10dB at 10kHz
MP3 Playback	MP3 (FAT 32 Format) Port: USB-A (Full speed)
Built-in Speaker	6.5"/6Ω Dual Cone Speaker
Protections	AC Fuse: 1 Amp. 250V T 1 AL, DC Fuse: 4 Amp. (T 4A L)
Power Supply	AC : 220V-240V 50/60Hz DC : 12V Car Battery (external) 12V 7.2Ah Rechargeable battery (built-in)
AC Power Consumption	50VA
Dimensions	W245 x H345 x D175 mm
Weight	8.2 kg

Design and Specifications are subject to change without notice owing to continuous product up-gradation. Technical specifications are subject to production tolerances. We cannot be held responsible for printing errors, should they occur. **AHUJA** is a registered trademark of Ahuja Radios in India and other countries. © Copyright Ahuja Radios, 2015. All rights reserved. Any unauthorized reproduction or use of logos, images or design elements is strictly prohibited by law. No part of this compilation may be reproduced in any manner or translated without written permission.

AHUJA RADIOS

215, Okhla Industrial Estate, New Delhi-110020, INDIA

C-45, Phase-II, Noida-201305 (UP) INDIA

Tel.: +91-11-26831549, 41612474 Fax: +91-11-26847287

E-mail: ahuja@ahujaradios.com Website: www.ahujaradios.com

E. & O. E. 0K/00/15